

THE Floor Plans

POINT CHESAPEAKE

ON THE BAY

a condominium community

3 Bedrooms 2.5 Bath Luxury Homes



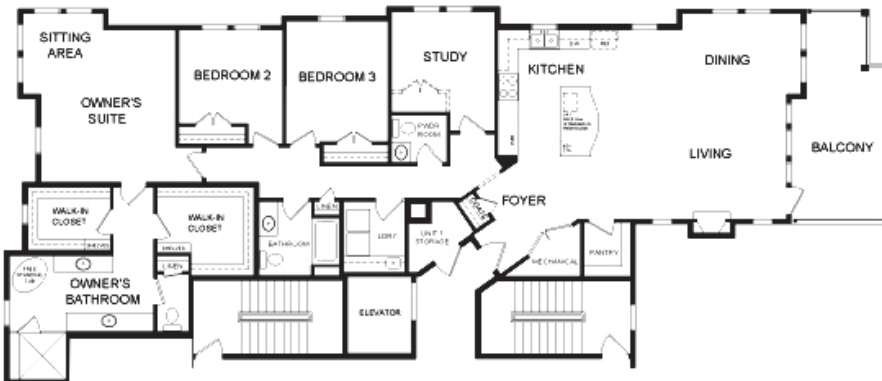
SUNRISE
LIVING AREA ~ 2,704 SQ.FT.

Storage ~ 40+/- sq. ft.

Garage ~ 400+ sq. ft.

Balcony ~ 229 sq. ft.

TOTAL ~ 2,910+ SQ.FT.*



HORIZON
LIVING AREA ~ 2,554 SQ.FT.

Storage ~ 40+/- sq. ft.

Garage ~ 400+ sq. ft.

Balcony ~ 235 sq. ft.

TOTAL ~ 2,975+ SQ.FT.*

Named for light, these modern beach home designs afford you a front row seat to the 'show', the big, beautiful Chesapeake Bay. Living and entertaining spaces are front and center with banks of windows to bring in the sunlight and bay view.

Linda Bray
Jennifer Dawn

Office: (757) 286-6160
PointChesapeake@BHHSTowne.com
www.PointChesapeakeOnTheBay.com



BERKSHIRE HATHAWAY
HomeServices
Towne Realty

LUXURY
COLLECTION

1101 Laskin Road | Virginia Beach, VA 23451



Exclusive Agent Representing the Seller. All information is believed to be accurate but is not warranted and is solely a guide to prospective purchasers who should satisfy themselves by inspection or otherwise as to the correctness of this information. ©2021 BHH Affiliates, LLC. An independently owned and operated franchisee of BHH Affiliates, LLC. Berkshire Hathaway HomeServices and the Berkshire Hathaway HomeServices symbol are registered service marks of Columbia Insurance Company, a Berkshire Hathaway affiliate. Equal Housing Opportunity. Berkshire Hathaway HomeServices Towne Realty is an affiliate of TowneBank.

